



Planning Process and Current Conditions

By: Thurman Smith

A Lot Has Happened Since the Last Planning Effort



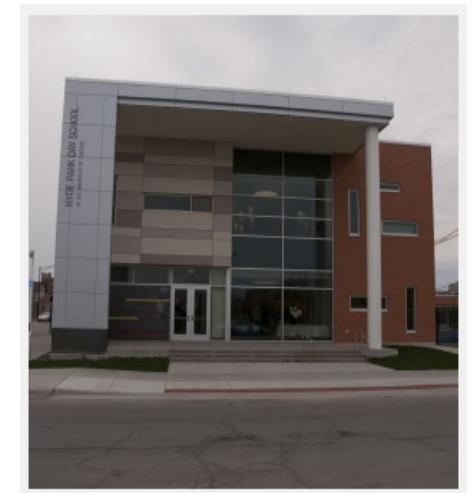
Woodlawn Park
Preservation of Affordable
Housing





Hyde Park Day School And Sonia Shankman Orthogenic School

Leslie Shankman School Corp.
(Serving Children with Special Needs)





Sunshine

gospel ministries





965 E. 61st Street

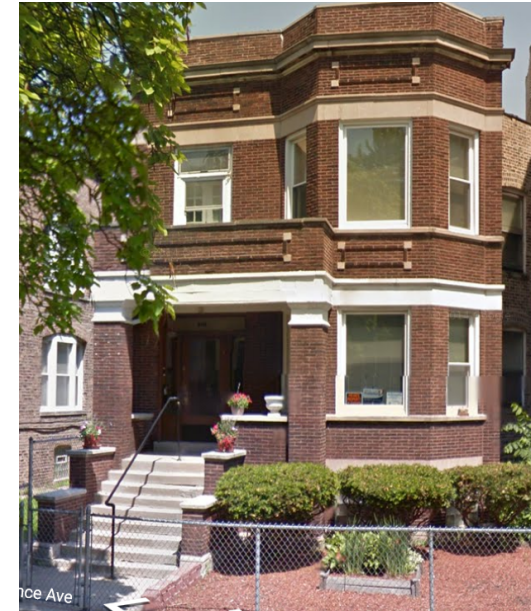
Ascendance Realty



Micro Market Recovery Program Recovering and Revitalizing Woodlawn Buildings

CURRENT
CONDITION

UPSIDE
POTENTIAL



URL: <http://www.chicagosp.org/Our-neighborhoods/Neighborhoods-where-NSP-Chicago-has-acquired-properties/Woodlawn.html>

Neighborhood Stabilization Program (NSP) Homes for Sale in Woodlawn

1. 6110 S. Eberhart Ave., 3 units

6110 S. Eberhart Ave.
Chicago, IL

2. 6125 S. St. Lawrence Ave., 2 units

6125 S. St. Lawrence Ave.
Chicago, IL

3. 6153-6159 S. Eberhart Ave., 18 units

6153-6159 S. Eberhart Ave.
Chicago, IL

4. 6153-6159 S. St. Lawrence Ave., 18 units

6153-6159 S. St. Lawrence Ave.
Chicago, IL

5. 6154-6156 S. Rhodes Ave., 12 units

6154-6156 S. Rhodes Ave.
Chicago, IL

6. 6156-6158 S. Vernon Ave., 12 units

6156-6158 S. Vernon Ave.
Chicago, IL

7. 616 E. 67th St., 1 unit

616 E. 67th St.
Chicago, IL

8. 6200 S. Vernon Ave., 15 units

6200 S. Vernon Ave.
Chicago, IL

9. 6200-6206 S. Rhodes Ave., 12 units

6200-6206 S. Rhodes Ave.
Chicago, IL

10. 6201-6203 S. Eberhart Ave., 15 units

6201-6203 S. Eberhart Ave.
Chicago, IL

11. 6205 S. Langley Ave., 19 units

6205 S. Langley Ave.
Chicago, IL

12. 6316 S. Rhodes Ave., 2 units

6316 S. Rhodes Ave.
Chicago, IL

13. 6323 S. Ingleside Ave., 3 units

6323 S. Ingleside Ave.
Chicago, IL

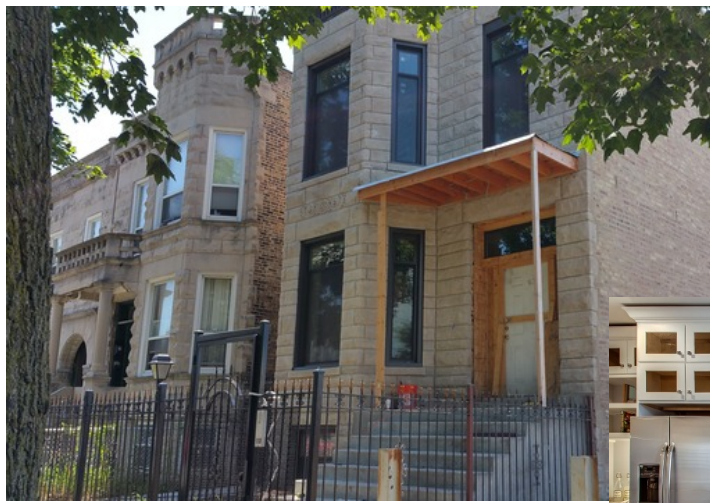
14. 6428 S. Ingleside Ave., 3 units

6428 S. Ingleside Ave.
Chicago, IL

15. 6456 S. Maryland Ave., 12 units

6456 S. Maryland Ave.
Chicago, IL

SIGNS OF A MARKET RECOVERY ARE IN FULL SWING



6320 S. Ellis
List: \$529,000



6513 S. Woodlawn
List: \$240,000



6510 S. Drexel
List: \$189,000



And There Are Many More Examples



And Even More is On the Drawing Boards

(Details Available On Line at Arthur m Brazier Foundation)

URL: <http://69.195.124.79/~brazierf/news-2/>

The Strand Apartments

Address: 6315 S. Cottage Grove

Status: Under Construction



Woodlawn Grocer - TBD

Address: **NWC 61st & Cottage**

Status: Planning



UofC Charter High School

Address: 63rd & Woodlawn

Status: In Design Phase



Edward G. Irvin Foundation Community House

Address: 500-504 E 67th Street

Status: 90% complete



And Even More is On the Drawing Boards

(Details Available On Line at Arthur m Brazier Foundation)

URL: <http://69.195.124.79/~brazierf/news-2/>

Cottage Grove Apartments

Address: 64th & Cottage Grove

Status: Legal Delay



Network of Woodlawn - Robotics

Address: TBD

Status: Pre-Funding Stage



POAH - Trianon Lofts

Address: SEC 61st & Cottage

Status: In Design Phase



Sunshine Gospel Ministry -

Phase III

Address: 61st Street

Status: Planning

And Even More is On the Drawing Boards

(Details Available On Line at Arthur m Brazier Foundation)

URL: <http://69.195.124.79/~brazierf/news-2/>

POAH & IFF

Address: 63rd & Maryland

Status: In Discussion Stage



POAH - Woodlawn Station

Address: **NEC 63rd & Cottage**

Residential Over Retail

Status: Planning



Friends Family Community Health

Address: TBD/

Status: In Dis



POAH: Market Rate Housing

Address: Various

Status: Planning



AND POSSIBLY! A PRESIDENTIAL LIBRARY



Revitalization Challenges

Speculation/ Cash Buyers

Displacement

Income Disparities

Investor Confidence / Appraisals

Social & Economic Factors





Manage the Challenges Through Engagement

Setting the Stage for Neighborhood Redevelopment



An Inclusive Community Driven Solution



**Help Woodlawn
Become a Community of Choice
Be Part of the Process!**

